

# HIBISCUS LAKE ESTATES

PREPARED BY: BURLISON A. GENTRY, PSM NO. 2580  
GENTRY ENGINEERING AND LAND SURVEYING, INC.  
PO BOX 83 2101, DELRAY BEACH, FLORIDA

A REPLAT OF A PORTION OF SUBDIVISION OF LOT 2, SECTION 8  
TOWNSHIPS 45 AND 46 AS RECORDED IN PLAT BOOK 1, PAGE 4.  
SECTION 8, TOWNSHIP 46 SOUTH, RANGE 43 EAST  
DELRAY BEACH, PALM BEACH COUNTY, FLORIDA  
SHEET 2 OF 2  
JANUARY, 2008

5/8" IRF  
IN CONC NW CORNER  
SE 1/4. S. 8  
TWP 46 S  
R 43 E

S 1 17' 07" E  
334.39

PRM FOUND  
2" X 2" CONC MONUMENT  
NO ID.

PLAT LIMITS

344.27' N 89 14' 36" E

N 46 01' 16" W NOT A PART OF THIS PLAT  
EX 15' UTILITY EASEMENT ORB 7208, P 461

PORTION OF LOT 2, SECTION 8  
P.B. I. P. 4

EX 20' INGRESS  
EGRESS  
EASEMENT

X-OFF ON EXISTING  
SANITARY SEWER MANHOLE  
NE CORNER OF NW 1/4  
LOT 2, 8/46/43

EAST 1/4 CORNER  
SECTION 8, TWP 46 S  
RGE 43 E.  
CONCRETE MONUMENT  
FOUND, W/PBC DISK

PORTION OF LOT 2,  
SECTION 8  
P.B. I. P. 4

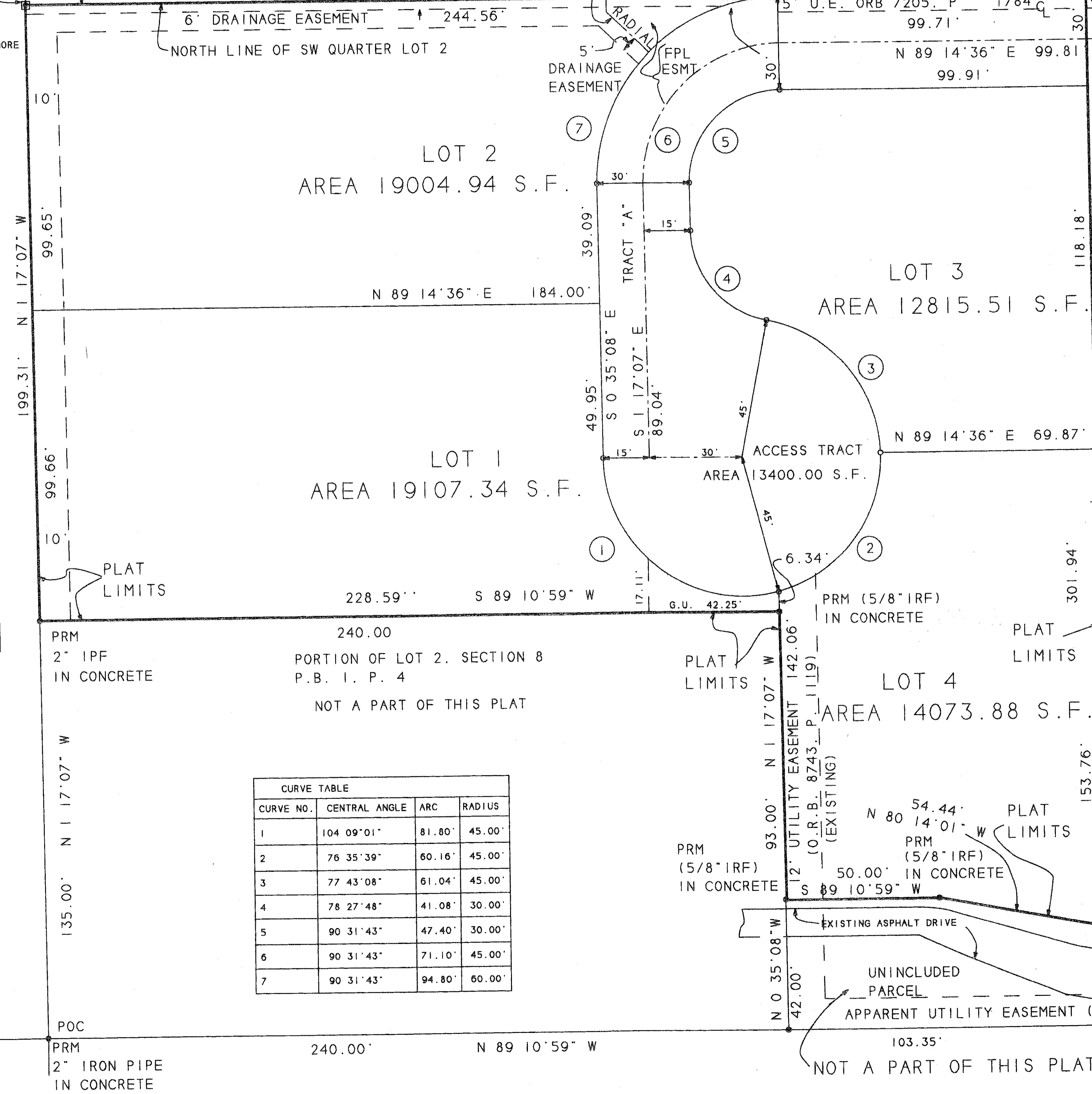
NOTICE: THIS PLAT AS RECORDED IN ITS GRAPHIC FORM IS THE  
OFFICIAL DEPICTION OF THE SUBDIVIDED LANDS DESCRIBED HEREIN  
AND IN NO CIRCUMSTANCES MAY BE SUPPLANTED IN AUTHORITY BY  
ANY OTHER GRAPHIC OR DIGITAL FORM OF THE PLAT. THERE MAY BE  
ADDITIONAL RESTRICTIONS THAT ARE NOT RECORDED ON THIS PLAT  
THAT MAY BE FOUND IN THE PUBLIC RECORDS OF PALM BEACH COUNTY,  
FLORIDA.

### LEGEND:

1. PRM INDICATES PERMANENT REFERENCE MONUMENT
2. PCP INDICATES PERMANENT CONTROL POINT
3. POC INDICATES POINT OF COMMENCEMENT
4. POB INDICATES POINT OF BEGINNING
5. PSM INDICATES PROFESSIONAL SURVEYOR AND MAPPER
6. U.E. INDICATES UTILITY EASEMENT
7. IRF INDICATES IRON ROD FOUND
8. PBC INDICATES PALM BEACH COUNTY
9. PC INDICATES POINT OF CURVE
10. PT INDICATES POINT OF TANGENT
11. PRC INDICATES POINT OF REVERSE CURVE
12. ② INDICATES CURVE NUMBER
13. C INDICATES CENTERLINE
14. ■ INDICATES 4" X 4" CONCRETE MONUMENT
15. BEARINGS REFERENCE THE CENTERLINE OF NE 11TH STREET BEARING N 89 18' 48" E, ALONG THE CENTER EAST-WEST QUARTER SECTION LINE OF SECTION 8 AND THE NORTH LINE OF LOT 2.
16. FLORIDA STATUTE 177.091 (29) ALL PLATTED UTILITY EASEMENTS SHALL PROVIDE THAT SUCH EASEMENTS SHALL ALSO BE EASEMENTS FOR THE CONSTRUCTION, INSTALLATION AND MAINTENANCE AND OPERATION OF CABLE TELEVISION SERVICES. PROVIDED HOWEVER, NO SUCH CONSTRUCTION, INSTALLATION, MAINTENANCE AND OPERATION OF CABLE TELEVISION SERVICES SHALL INTERFERE WITH THE FACILITIES AND SERVICES OF ELECTRIC, TELEPHONE, GAS OR OTHER PUBLIC UTILITY. THIS SECTION SHALL NOT APPLY TO THOSE PRIVATE EASEMENTS GRANTED TO A PARTICULAR PUBLIC UTILITY.
17. THERE SHALL BE NO BUILDINGS OR ANY KIND OF CONSTRUCTION PLACED ON UTILITY OR DRAINAGE EASEMENTS. CONSTRUCTION OR LANDSCAPING UPON MAINTENANCE OR MAINTENANCE ACCESS EASEMENTS MUST BE IN CONFORMANCE WITH ALL BUILDING AND ZONING CODES AND/OR ORDINANCES OF THE CITY OF DELRAY BEACH.
18. THE CITY OF DELRAY BEACH IS HEREBY GRANTED THE RIGHT OF ACCESS FOR EMERGENCY AND MAINTENANCE PURPOSES.
19. THERE SHALL BE NO TREES OR SHRUBS PLACED ON UTILITY EASEMENTS WHICH ARE PROVIDED FOR WATER AND SEWER USE OR UPON DRAINAGE EASEMENTS. LANDSCAPING ON OTHER UTILITY EASEMENTS SHALL BE ALLOWED ONLY AFTER CONSENT OF ALL THE UTILITY COMPANIES OCCUPYING SAME.

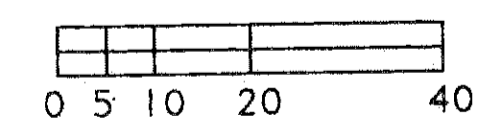
LAKE SHORE LINE

LAKE IDA



CURVE NO.	CENTRAL ANGLE	ARC	RADIUS
1	104 09' 01"	81.80'	45.00'
2	76 35' 39"	60.16'	45.00'
3	77 43' 08"	61.04'	45.00'
4	78 27' 48"	41.08'	30.00'
5	90 31' 43"	47.40'	30.00'
6	90 31' 43"	71.10'	45.00'
7	90 31' 43"	94.80'	60.00'

SCALE: 1" = 20'



GRAPHIC SCALE

PALM BEACH COUNTY )  
STATE OF FLORIDA )  
THIS PLAT WAS FILED FOR  
RECORD AT \_\_\_\_\_ M. THIS \_\_\_\_\_ DAY  
OF \_\_\_\_\_ 2008  
AND DULY RECORDED IN PLAT  
BOOK \_\_\_\_\_ PAGE \_\_\_\_\_  
SHARON R. BOCK, CLERK AND  
CONTROLLER  
BY \_\_\_\_\_